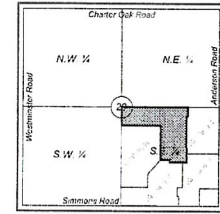


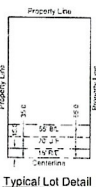
Final Plat of:  
**Indian Ridge, Section 4**  
 A Subdivision in the Southeast Quarter, Section 29,  
 Township 15 North, Range 1 West of the Indian Meridian  
 Logan County, Oklahoma



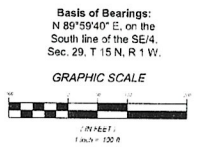
Vicinity Map  
 Section 29, Township 15N, Range 1W  
 Not To Scale



- Brady Built coming soon
- sold
- available



Legend	
(Symbol)	DESCRIPTION
(Symbol)	DESCRIPTION
(Symbol)	DESCRIPTION
(Symbol)	DESCRIPTION
(Symbol)	DESCRIPTION
(Symbol)	DESCRIPTION
(Symbol)	DESCRIPTION
(Symbol)	DESCRIPTION
(Symbol)	DESCRIPTION
(Symbol)	DESCRIPTION
(Symbol)	DESCRIPTION
(Symbol)	DESCRIPTION
(Symbol)	DESCRIPTION
(Symbol)	DESCRIPTION



**Final Plat of  
 Indian Ridge, Section 4**

Land Surveying and Planning  
 1601 S.W. 89th Street, Building C, Suite 200  
 Oklahoma City, Oklahoma 73159  
 Tel: (405) 586-0174 • Fax: (405) 581-4881  
 C. A. 819 - Exp. June 30, 2025  
 www.halesurvey.com  
 Project No. 6073.1