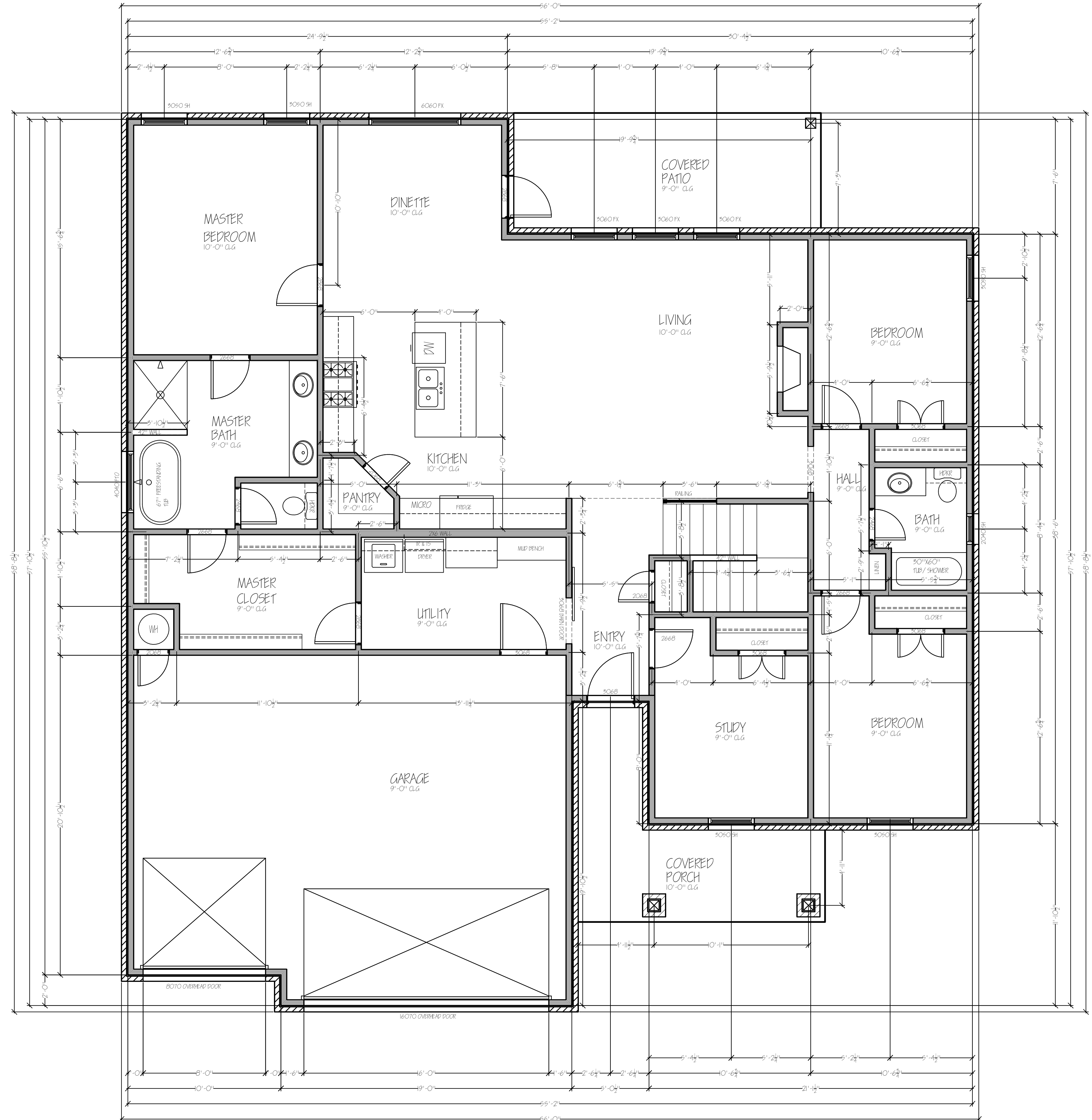
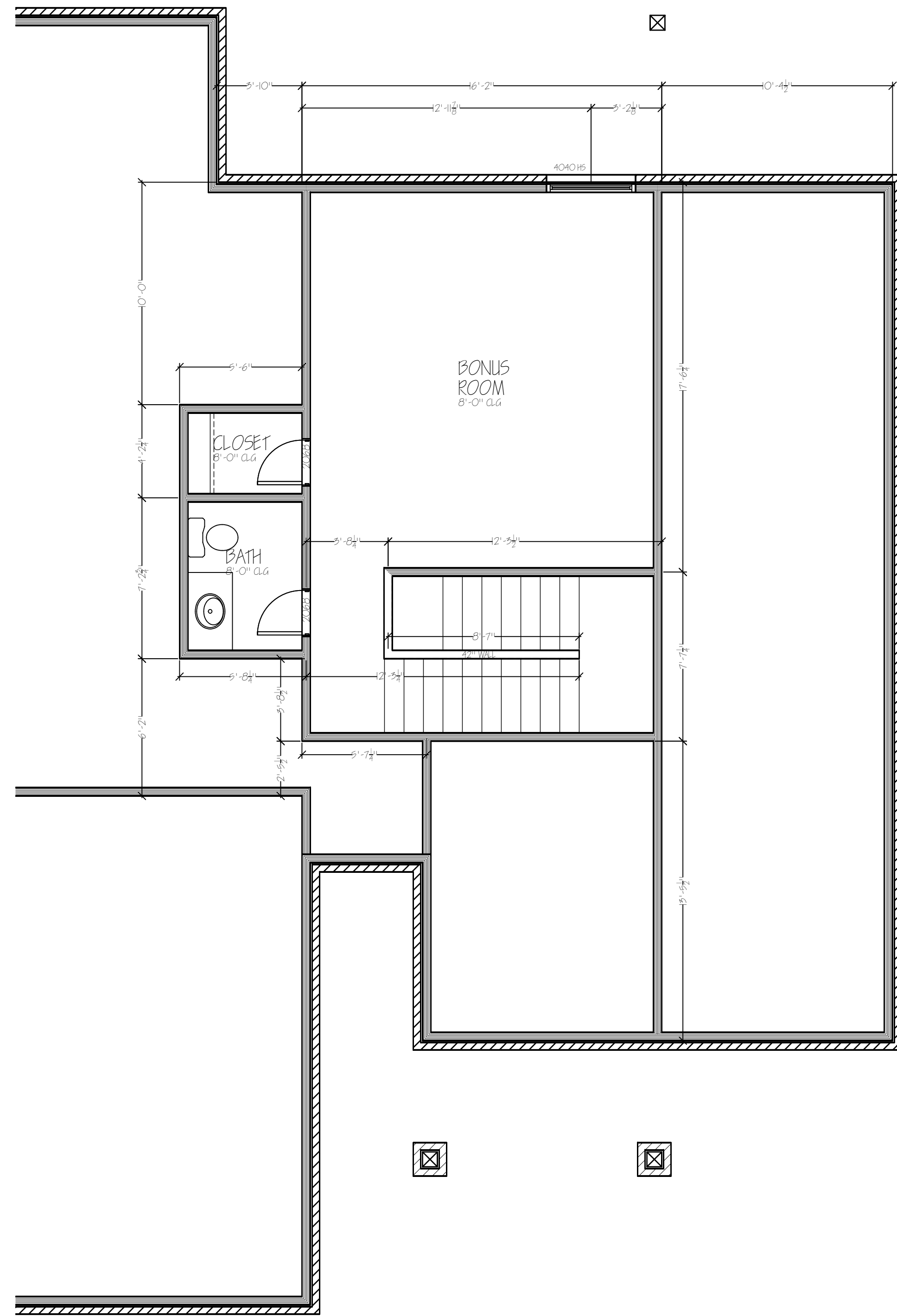


↑ 10629 TWO LAKES DR.
 COUER D'ALENE
 LOT 1 BLOCK 5
 N
 SCALE: 1"=20'



HOME DESIGN



BRADY BUILT HOMES
 10629 TWO LAKES DR
 ADDITION COVER D'ALEN
 BLOCK 5 LOT 1

10/26/22

FRAME:

1943

UP FRAME:

371

GARAGE:

651

FRONT PORCH:

130

BACK PATIO:

150

TOTAL FRAME:

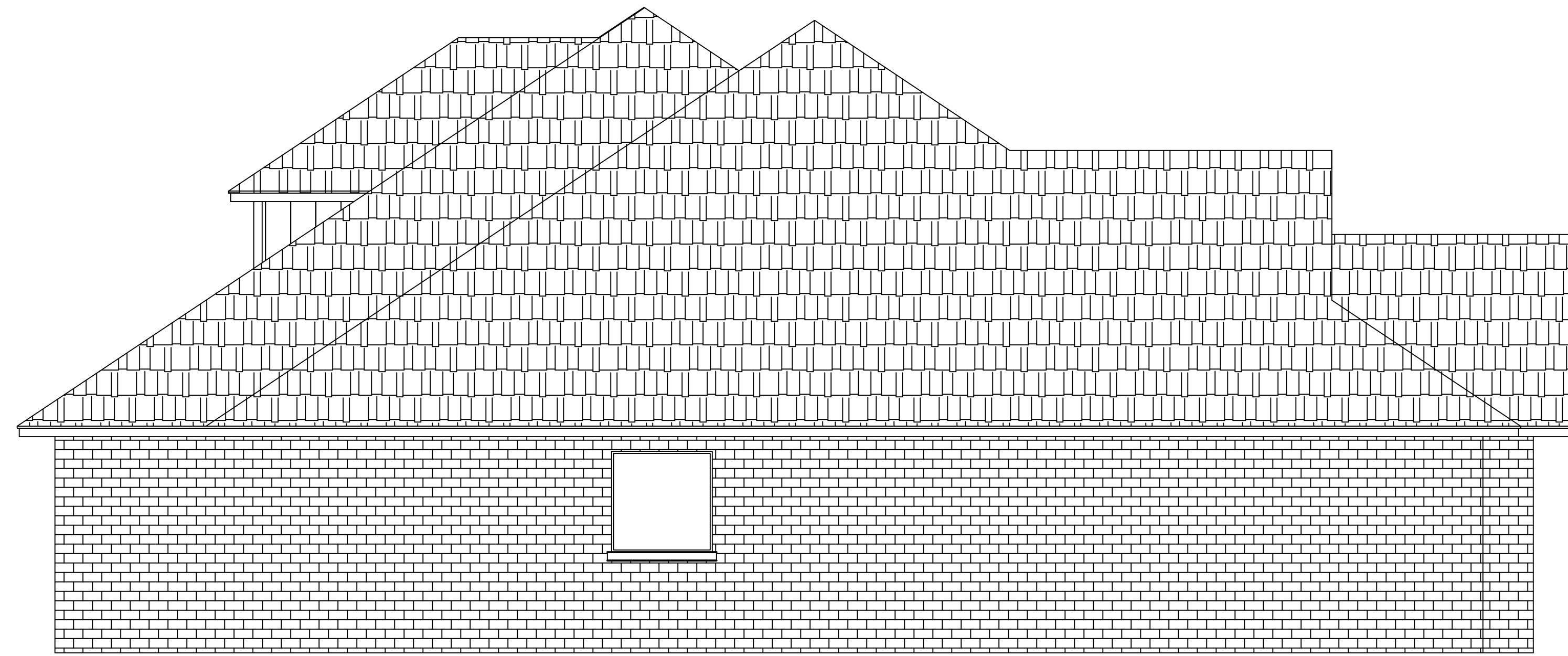
3245

VENEER:

2384

SHEET #

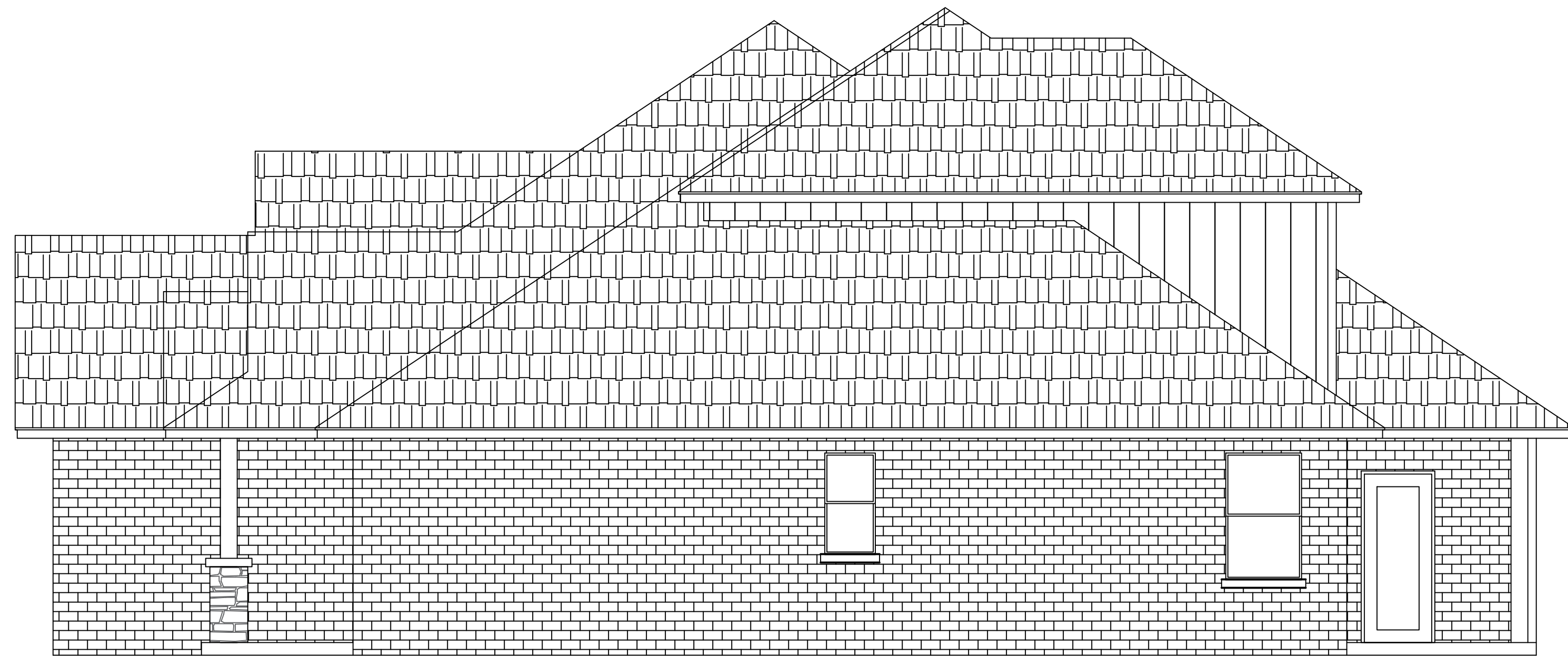
2



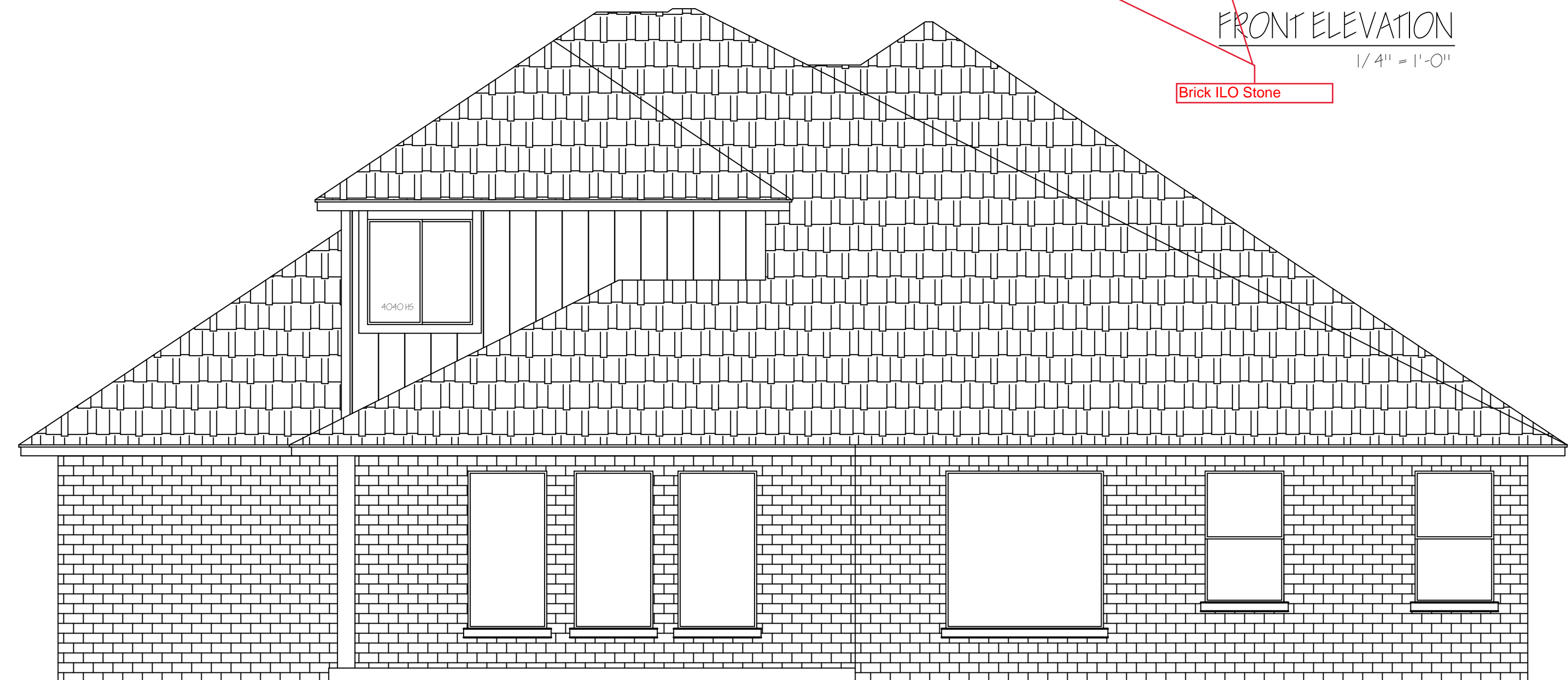
LEFT ELEVATION
1/4" = 1'-0"



FRONT ELEVATION
1/4" = 1'-0"



RIGHT ELEVATION
1/4" = 1'-0"



REAR ELEVATION
1/4" = 1'-0"

BRADY BUILT HOMES
10629 TWO LAKES DR
ADDITION COUER D'ALEN
BLOCK 5 LOT 1

10/26/22

FRAME:
1943
UP FRAME:
371
GARAGE:
651
FRONT PORCH:
130
BACK PATIO:
150
TOTAL FRAME:
3245
VENEER:
2384

SHEET #

3



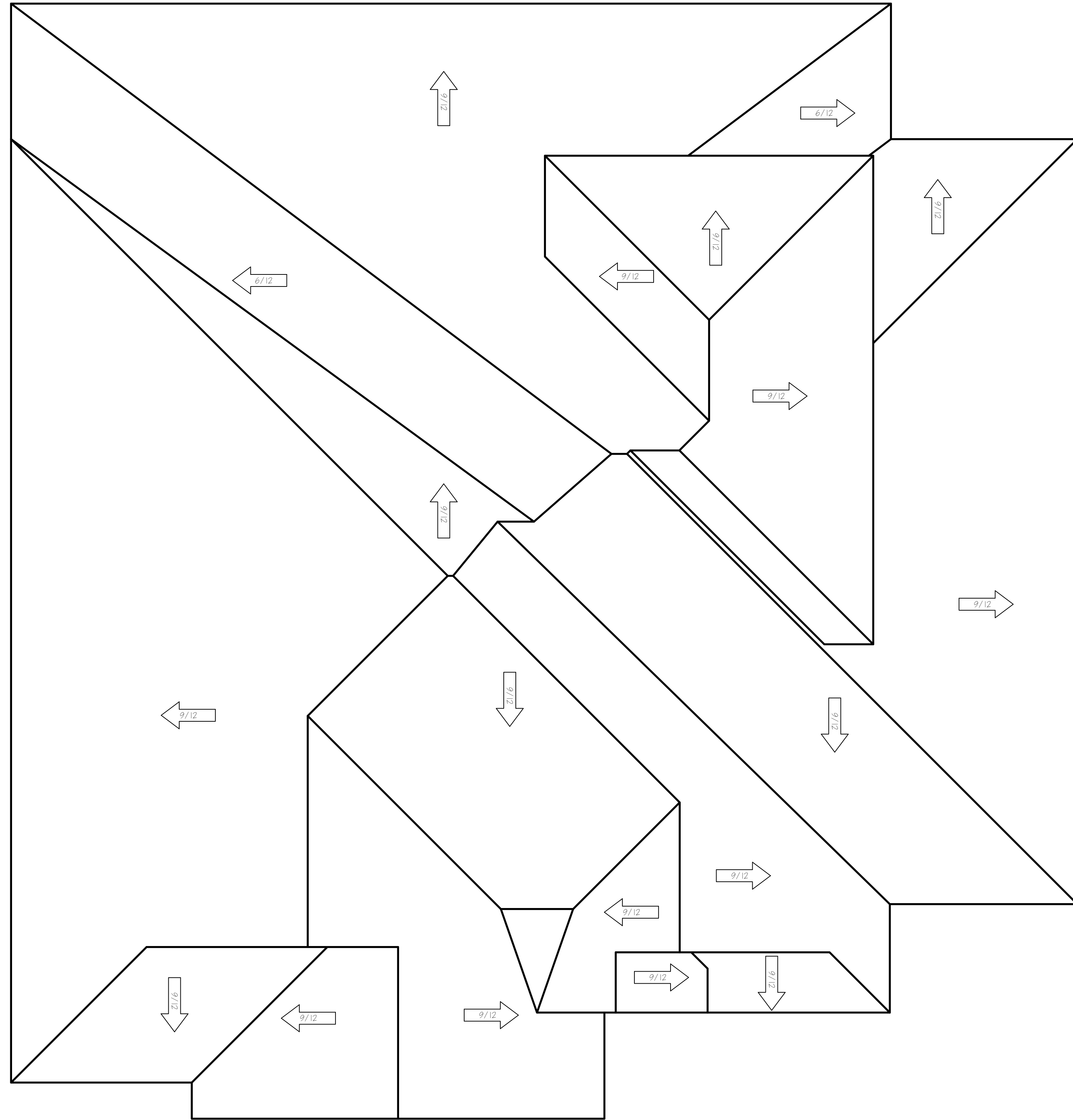
BRADY BUILT HOMES
10629 TWO LAKES DR
ADDITION COUER D'ALEN
BLOCK 5 LOT 1

10/26/22

FRAME:
1943
UP FRAME:
371
GARAGE:
651
FRONT PORCH:
130
BACK PATIO:
150
TOTAL FRAME:
3245
VENEER:
2384

SHEET #

4



BRADY BUILT HOMES
 10629 TWO LAKES DR
 ADDITION COVER D/ALEN
 BLOCK 5 LOT 1

10/26/22

FRAME:
 1943
 UP FRAME:
 371
 GARAGE:
 651
 FRONT PORCH:
 130
 BACK PATIO:
 150
 TOTAL FRAME:
 3245
 VENEER:
 2384

SHEET #

5

