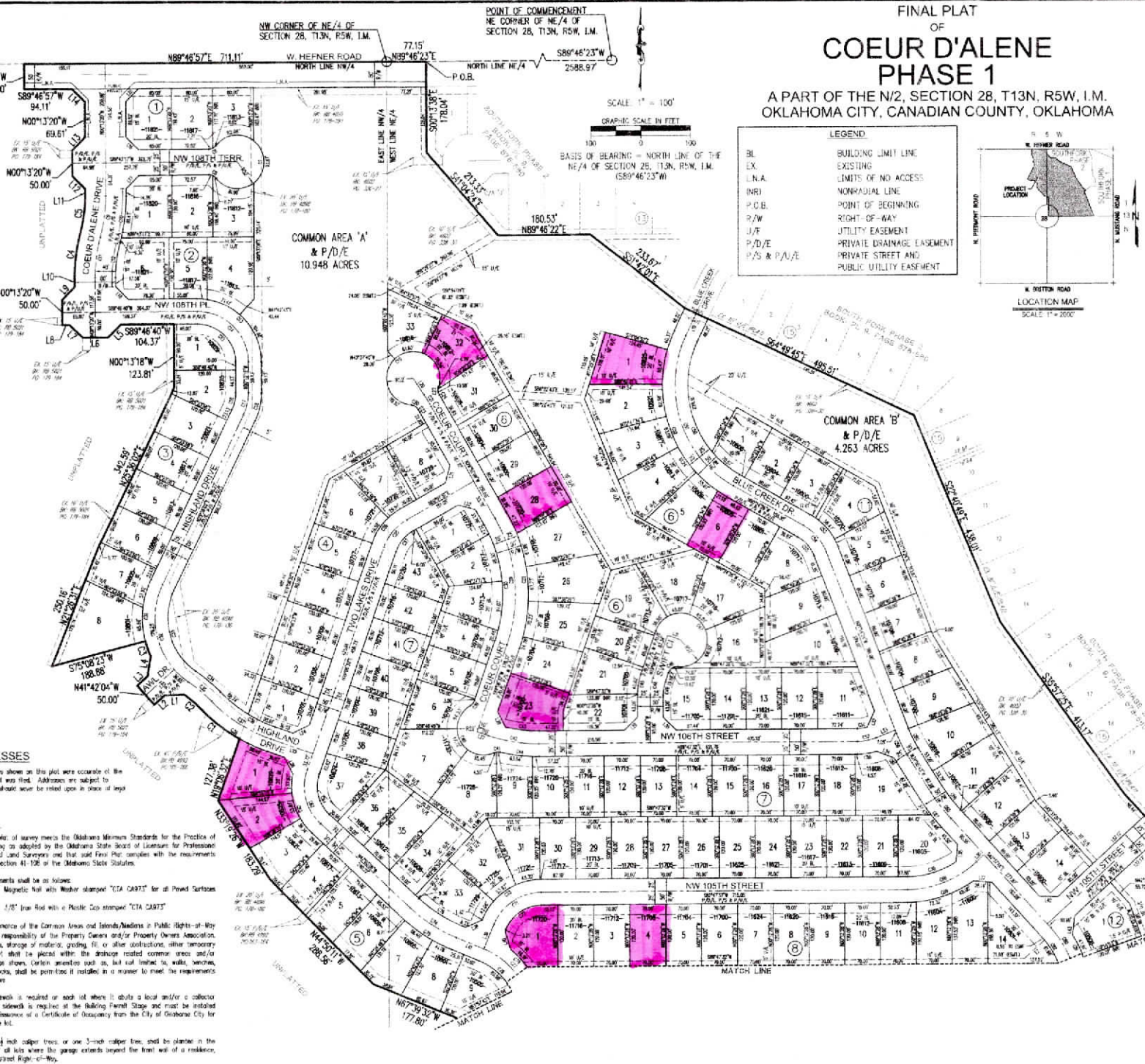


FINAL PLAT OF COEUR D'ALENE PHASE 1

A PART OF THE N/2, SECTION 28, T13N, R5W, I.M.
OKLAHOMA CITY, CANADIAN COUNTY, OKLAHOMA

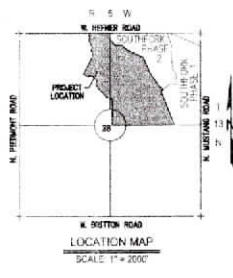


CURVE TABLE					
CURVE #	LENGTH	RADIUS	DELTA	CHORD BEARING	CHORD LENGTH
C1	32.87	325.00	0°34'32"	N82°38'30"W	31.72
C2	47.88	275.00	0°30'48"	N84°15'47"W	47.04
C3	11.87	175.00	0°16'24"	N82°04'47"W	11.83
C4	36.87	340.00	0°19'36"	S87°25'48"W	36.87
C5	48.47	380.00	0°19'36"	S87°25'48"W	48.24
C6	16.47	160.00	0°23'00"	S84°36'17"W	15.87
C7	257.87	52.00	360°00'00"	S87°04'16"W	43.89
C8	46.37	15.00	0°24'00"	N84°14'47"W	43.87
C9	36.13	300.00	0°25'00"	S87°25'48"W	36.00
C10	36.87	340.00	0°19'36"	N87°25'48"W	36.87
C11	30.13	300.00	0°25'00"	S87°25'48"W	29.90
C12	45.87	380.00	0°19'36"	S87°25'48"W	45.24
C13	186.37	25.00	0°00'00'00"	N84°14'27"W	176.78
C14	25.00	150.00	0°00'00'00"	N84°14'27"W	24.47
C15	111.87	75.00	0°00'00'00"	N84°14'27"W	106.27
C16	15.86	75.00	0°29'48"24"	N82°41'22"E	15.57
C17	45.87	150.00	0°29'48"24"	N82°41'22"E	44.89
C18	36.13	150.00	0°29'48"24"	N82°41'22"E	35.86
C19	257.88	52.00	360°00'00"00"	N84°14'27"E	43.87
C20	17.00	15.00	0°24'00"00"	S84°36'17"W	16.45
C21	24.14	400.00	0°19'36"00"	S87°25'48"W	23.27
C22	15.86	75.00	0°29'48"24"	S82°41'22"W	15.28
C23	7.97	375.00	0°19'36"00"	S87°25'48"W	7.87
C24	11.87	425.00	0°19'36"00"	S87°25'48"W	11.87
C25	15.86	300.00	0°19'36"00"	N82°37'57"W	15.86
C26	36.37	325.00	0°19'36"00"	N82°37'57"W	35.86
C27	25.70	75.00	0°19'36"00"	S87°25'48"W	25.56
C28	271.87	325.00	0°00'00"00"	S87°25'48"W	268.44
C29	256.87	300.00	0°00'00"00"	S87°25'48"W	248.71
C30	225.88	275.00	0°00'00"00"	S87°25'48"W	227.88
C31	185.48	175.00	0°00'00"00"	N82°37'57"W	182.29
C32	257.87	48.75	0°00'00"00"	N82°37'57"W	195.43
C33	171.87	25.00	0°00'00"00"	N82°37'57"W	162.86
C34	44.34	325.00	0°19'36"00"	N82°37'57"W	44.25
C35	36.37	300.00	0°19'36"00"	N82°37'57"W	36.28
C36	171.88	275.00	0°00'00"00"	N82°37'57"W	167.22
C37	158.87	300.00	0°00'00"00"	N82°37'57"W	157.29
C38	158.87	325.00	0°00'00"00"	N82°37'57"W	148.17
C39	12.87	9.00	0°47'12"00"	S82°30'00"E	12.54
C40	13.87	52.85	77°45'37"	S84°36'07"E	13.87
C41	11.86	9.00	0°19'36"00"	N82°37'57"W	11.87

CURVE TABLE					
CURVE #	LENGTH	RADIUS	DELTA	CHORD BEARING	CHORD LENGTH
C42	18.44	300.00	0°19'36"00"	N82°37'57"W	18.00
C43	35.44	275.00	0°19'36"00"	N82°37'57"W	34.80
C44	76.47	325.00	0°19'36"00"	N82°37'57"W	75.60
C45	42.44	250.00	0°19'36"00"	N82°37'57"W	41.80
C46	33.57	180.00	0°19'36"00"	N82°37'57"W	33.00
C47	23.39	130.00	0°19'36"00"	N82°37'57"W	23.00
C48	24.17	8.00	0°19'36"00"	N82°37'57"W	23.80
C49	25.20	15.00	0°19'36"00"	N82°37'57"W	24.80
C50	288.17	250.00	0°00'00"00"	N82°37'57"W	283.17
C51	338.36	225.00	0°00'00"00"	N82°37'57"W	331.17
C52	373.40	250.00	0°00'00"00"	N82°37'57"W	365.17
C53	40.40	175.00	0°19'36"00"	N82°37'57"W	39.80
C54	48.58	100.00	0°19'36"00"	N82°37'57"W	47.80
C55	25.27	75.00	0°19'36"00"	N82°37'57"W	24.80
C56	16.64	75.00	0°19'36"00"	N82°37'57"W	16.20
C57	36.71	600.00	0°19'36"00"	N82°37'57"W	36.30
C58	37.83	175.00	0°19'36"00"	N82°37'57"W	37.20
C59	48.64	250.00	0°19'36"00"	N82°37'57"W	47.80
C60	41.27	250.00	0°19'36"00"	N82°37'57"W	40.60
C61	40.83	150.00	0°19'36"00"	N82°37'57"W	40.00
C62	111.87	150.00	0°19'36"00"	N82°37'57"W	110.80
C63	126.17	175.00	0°19'36"00"	N82°37'57"W	124.80
C64	36.83	75.00	0°19'36"00"	N82°37'57"W	36.40
C65	46.29	250.00	0°19'36"00"	N82°37'57"W	45.60
C66	48.34	200.00	0°19'36"00"	N82°37'57"W	47.40
C67	42.47	225.00	0°19'36"00"	N82°37'57"W	41.60
C68	100.36	175.00	0°19'36"00"	N82°37'57"W	98.80
C69	111.25	180.00	0°19'36"00"	N82°37'57"W	109.60
C70	99.25	75.00	0°19'36"00"	N82°37'57"W	97.60
C71	147.96	125.00	0°19'36"00"	N82°37'57"W	145.60
C72	159.89	150.00	0°19'36"00"	N82°37'57"W	157.20
C73	159.89	175.00	0°19'36"00"	N82°37'57"W	157.20
C74	159.89	200.00	0°19'36"00"	N82°37'57"W	157.20
C75	159.89	225.00	0°19'36"00"	N82°37'57"W	157.20
C76	159.89	250.00	0°19'36"00"	N82°37'57"W	157.20
C77	159.89	275.00	0°19'36"00"	N82°37'57"W	157.20
C78	159.89	300.00	0°19'36"00"	N82°37'57"W	157.20
C79	159.89	325.00	0°19'36"00"	N82°37'57"W	157.20
C80	159.89	350.00	0°19'36"00"	N82°37'57"W	157.20
C81	159.89	375.00	0°19'36"00"	N82°37'57"W	157.20
C82	159.89	400.00	0°19'36"00"	N82°37'57"W	157.20
C83	159.89	425.00	0°19'36"00"	N82°37'57"W	157.20
C84	159.89	450.00	0°19'36"00"	N82°37'57"W	157.20
C85	159.89	475.00	0°19'36"00"	N82°37'57"W	157.20
C86	159.89	500.00	0°19'36"00"	N82°37'57"W	157.20
C87	159.89	525.00	0°19'36"00"	N82°37'57"W	157.20
C88	159.89	550.00	0°19'36"00"	N82°37'57"W	157.20
C89	159.89	575.00	0°19'36"00"	N82°37'57"W	157.20
C90	159.89	600.00	0°19'36"00"	N82°37'57"W	157.20

LEGEND

- BL BUILDING LIMIT LINE
- EX EXISTING
- L.N.A. LIMITS OF NO ACCESS
- (NR) NONRAILROAD LINE
- P.C.B. POINT OF BEGINNING
- R/W RIGHT-OF-WAY
- U/E UTILITY EASEMENT
- P/D/E PRIVATE DRAINAGE EASEMENT
- PRIVATE STREET AND PUBLIC UTILITY EASEMENT
- P/S & P/A/E



EASEMENT LINE TABLE		
LINE #	LENGTH	DIRECTION
E1	88.87	S87°25'48"W
E2	52.40	S47°22'16"W
E3	76.46	S87°25'48"W
E4	62.32	S87°25'48"W

LINE TABLE		
LINE #	LENGTH	DIRECTION
L1	33.79	S87°25'48"W
L2	36.19	S47°22'16"W
L3	36.19	N87°25'48"W
L4	24.94	N87°25'48"W
L5	35.36	S47°22'16"W
L6	50.00	S87°25'48"W
L7	25.26	N82°14'27"W
L8	9.00	S87°25'48"W
L9	25.36	N44°46'46"E
L10	17.58	N87°14'27"W
L11	14.28	N87°14'27"W
L12	25.36	N44°46'46"E
L13	25.37	N44°46'46"E
L14	25.36	N44°46'46"E
L15	25.36	N44°46'46"E
L16	35.74	S47°22'16"W
L17	35.74	S47°22'16"W
L18	35.36	S47°22'16"W
L19	40.21	S87°14'27"W
L20	36.22	S47°22'16"W
L21	25.36	N87°25'48"W
L22	35.36	N87°25'48"W

FINAL PLAT TO SERVE
COEUR D'ALENE PHASE 1

CRAFTON TULL

SHEET NO. _____
DATE _____
PROJECT NO. _____
PV-0415